



AMERICAN CLEAN RESOURCES GROUP

CRITICAL MINERAL PROCESSING HUBS

OPTIMIZING ASSETS FOR U.S. MINERAL INDEPENDENCE
COUNTERING CHINA COMPETITION

SEPTEMBER 2025



MESSAGE FROM OUR CEO

CHARTING A COURSE FOR U.S. STRATEGIC MINERAL INDEPENDENCE

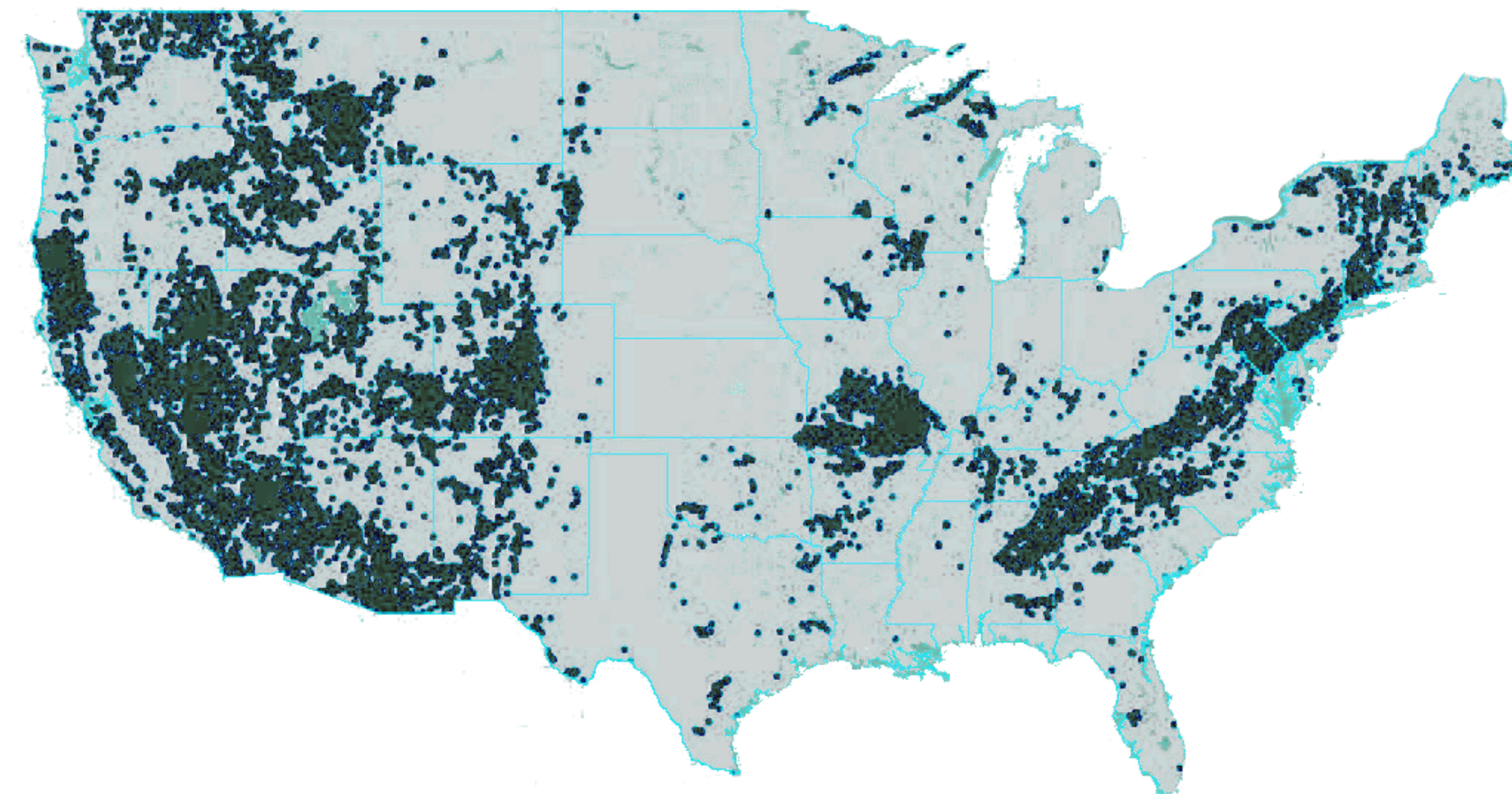


The United States faces a dual national security and energy emergency driven by dependence on foreign nations for critical minerals—materials essential to defense, clean energy, AI data centers, and advanced manufacturing.

Across the country, more than 300,000 abandoned mine sites hold vast mine waste (tailings) enriched with these same critical minerals. With today's technologies, this domestic resource can be harnessed to reduce reliance on foreign supply chains and secure U.S. mineral independence.

BLUF: American Clean Resources Group (ACRG) proposes the creation of Critical Mineral Processing Hubs in the Western United States, starting with our privately held land in Millers, Nevada. Rich in tailings deposits, this site will serve as the launch point for a national Hub network while supporting national security priorities and enhancing U.S. supply chain independence.

USGS IDENTIFIED TAILING SITES ACROSS THE UNITED STATES



OUR INITIATIVE WILL

- ★ **STRENGTHEN THE U.S. SUPPLY CHAIN**
 - Develop state-of-the-art facilities to process critical minerals domestically, reducing dependence on foreign refiners and advancing energy independence.
- ★ **TURN ABANDONED MINE WASTE INTO ECONOMIC GROWTH**
 - Create a network of Hubs across the Western U.S., anchored by Nevada, to optimize logistics, energy availability, and workforce development.
- ★ **ACCELERATE THROUGH PUBLIC-PRIVATE PARTNERSHIP**
 - We will work in partnership with federal and state agencies to accelerate permitting, remediation, and processing efforts, ensuring scalable replication nationwide.

FORWARD LOOKING STATEMENT

THE FINE PRINT

This document contains forward-looking statements within the scope of the safe harbor provisions as established by the U.S. Private Securities Litigation Reform Act of 1995. These forward-looking statements, excluding historical facts, represent the American Clean Resources Group's (the "Company") views and expectations. While the Company's management holds reasonable belief in the validity of these forward-looking statements, there can be no assurance that these expectations will prove accurate. These forward-looking statements inherently carry inherent risks and uncertainties that could result in future outcomes differing significantly from the Company's projections. Some of these potential risks and uncertainties encompass interpretations or reinterpretations of geological data, unfavorable outcomes from exploration efforts, challenges in obtaining the necessary permits for future exploration, development, or production activities, broader economic conditions affecting the industries in which the Company operates, regulatory requirements and approvals subject to uncertainty, fluctuations in mineral and commodity prices, final investment approvals, and the ability to secure financing on favorable terms, if at all. For more comprehensive insight into the factors that may deviate actual results from these forward-looking statements, please refer to the Company's filings with the Securities and Exchange Commission, including the Annual Report on Form 10-K for the year concluding on December 31, 2024, as well as any subsequent regulatory filings throughout 2025. The Company does not undertake any obligation to update or revise the information contained or referenced in this document reflecting its commitment to transparency and accuracy in disclosing forward-looking information. SOURCE American Clean Resources Group.



MILLERS SITE - PHASE 1

NEVADA WILL ESTABLISH OUR HUB MODEL

STEP 1

- Identify additional legacy tailing deposits encircling the geographic Hub location and secure access to the revenue-proven deposits

STEP 2

- Connect for power = 200-ton-per-day mill
- Finalize power enhancements/connections on the property for 1,000-ton-per-day mill

STEP 3

- Engage - Engineering, Procurement and Construction Management (EPCM)
- Install 200-ton-per-day CHIPS facility
- Planning for the construction of the 1,000-ton per day facility

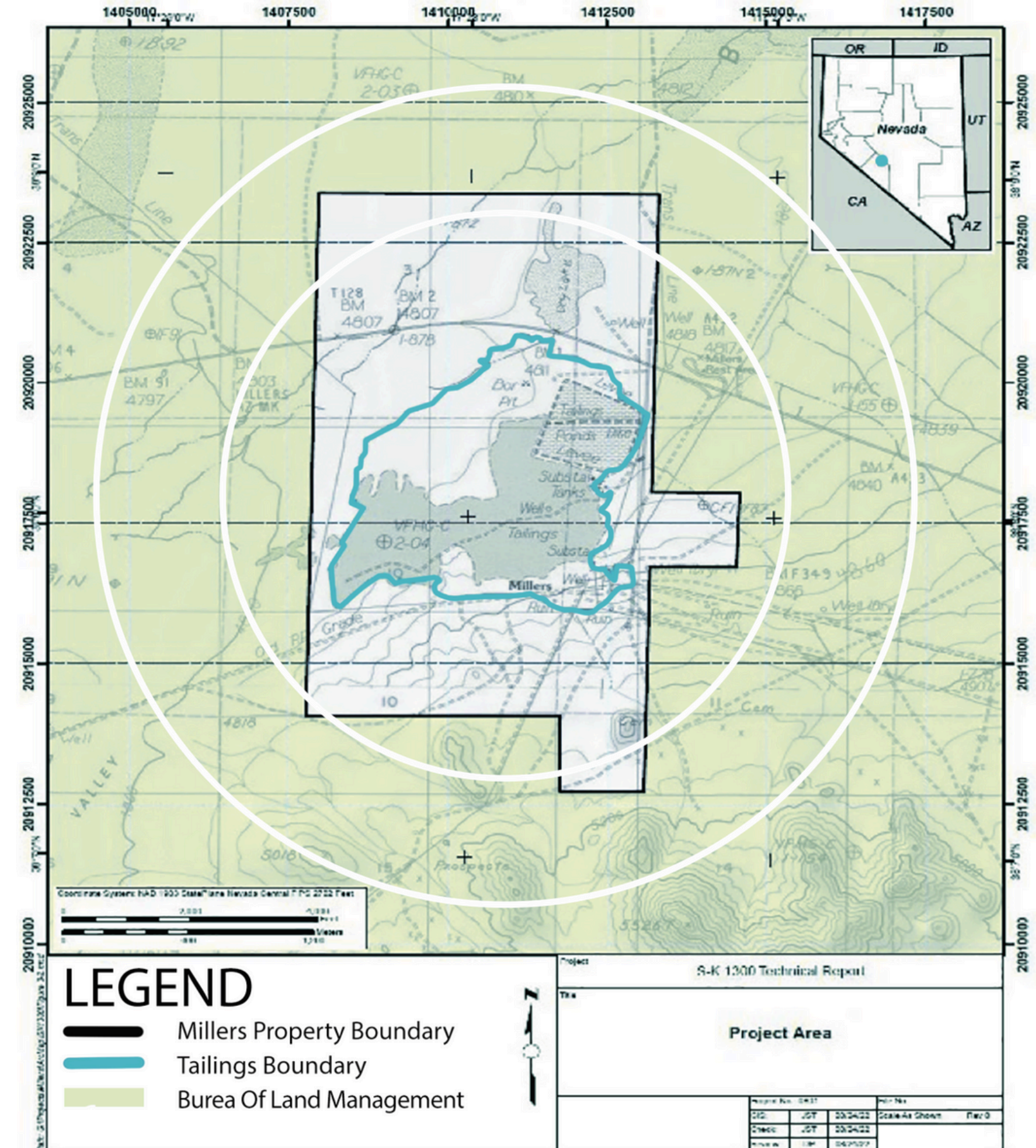
STEP 4

- Operation start-up
- Gold and silver doré
- Tailings dry stack on private land
- Offtaker engaged

STEP 5

- Begin transport and processing of off-site tailings

Figure 3.2 Land Status Map for the Millers Property Showing Full Extent of Tailings, Private Property Holdings and Lands Administered by U.S. Bureau of Land Management



MILLERS SITE DEFINED

SCOPE & RAW MATERIALS

PROPERTY

16 km (10 miles) west of Tonopah in west central Nevada, spans 495 hectares (1,223 acres) and is surrounded by land administered by the federal Bureau of Land Management.

SOURCE

The tailings at Millers were sourced entirely from the Tonopah mining district, a leading silver-gold mining operation in the Western United States.

RESOURCE DATA

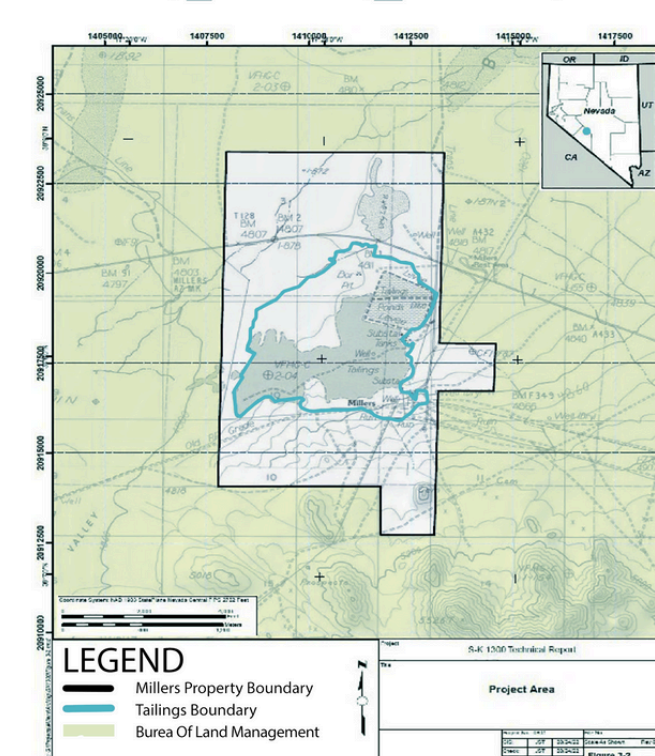
An estimated 3 million tons of tailings are on site.
400 million dollars of gross metal value - primarily gold and silver have been identified.

A process flowsheet for the recovery of gold and silver has been defined. Additional metallurgical test work is in progress to optimize metal recoveries.

Critical mineral extraction can begin 12-16 months from the date of project regulatory final approval.

An SK 1300 technical exploration report has been prepared by a qualified / credentialed geologist.

Figure 3.2 Land Status Map for the Millers Property Showing Full Extent of Tailings, Private Property Holdings and Lands Administered by U.S. Bureau of Land Management



Mineralogic samples contained 80% quartz, 10% feldspar, 5% micaceous iron-oxide, and 5% other minerals.

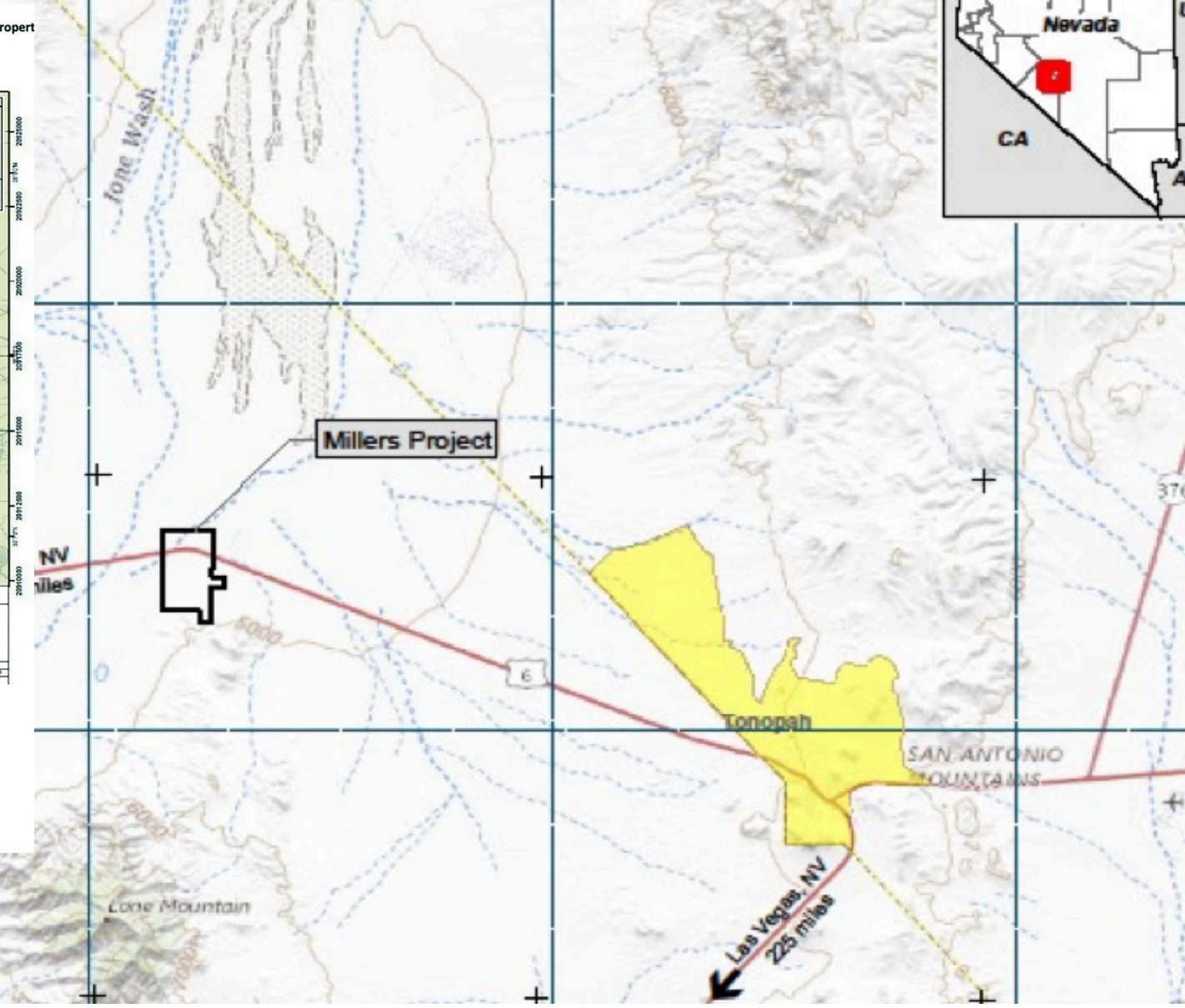


Figure 1.1 Locations of Mechanized Trenches and Auger Boreholes by NMX and Tailings Boundaries



SITE STRATEGIC ADVANTAGES

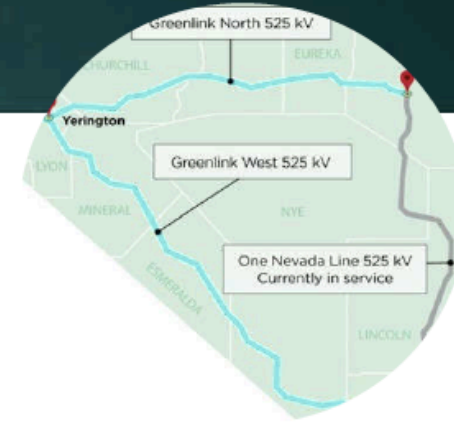
LOGISTICS, AQUIFER ACCESS, POWER



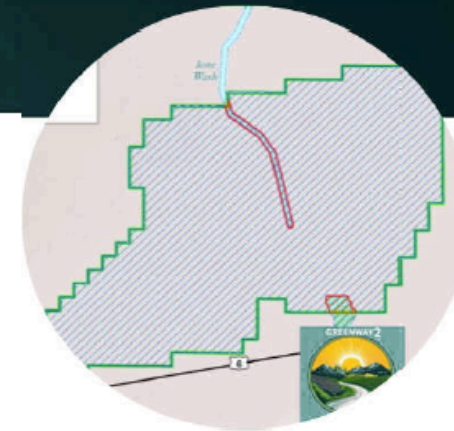
HWY 95



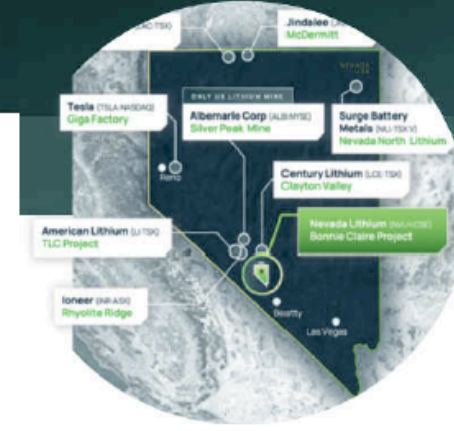
HAWTHORN RAILWAY



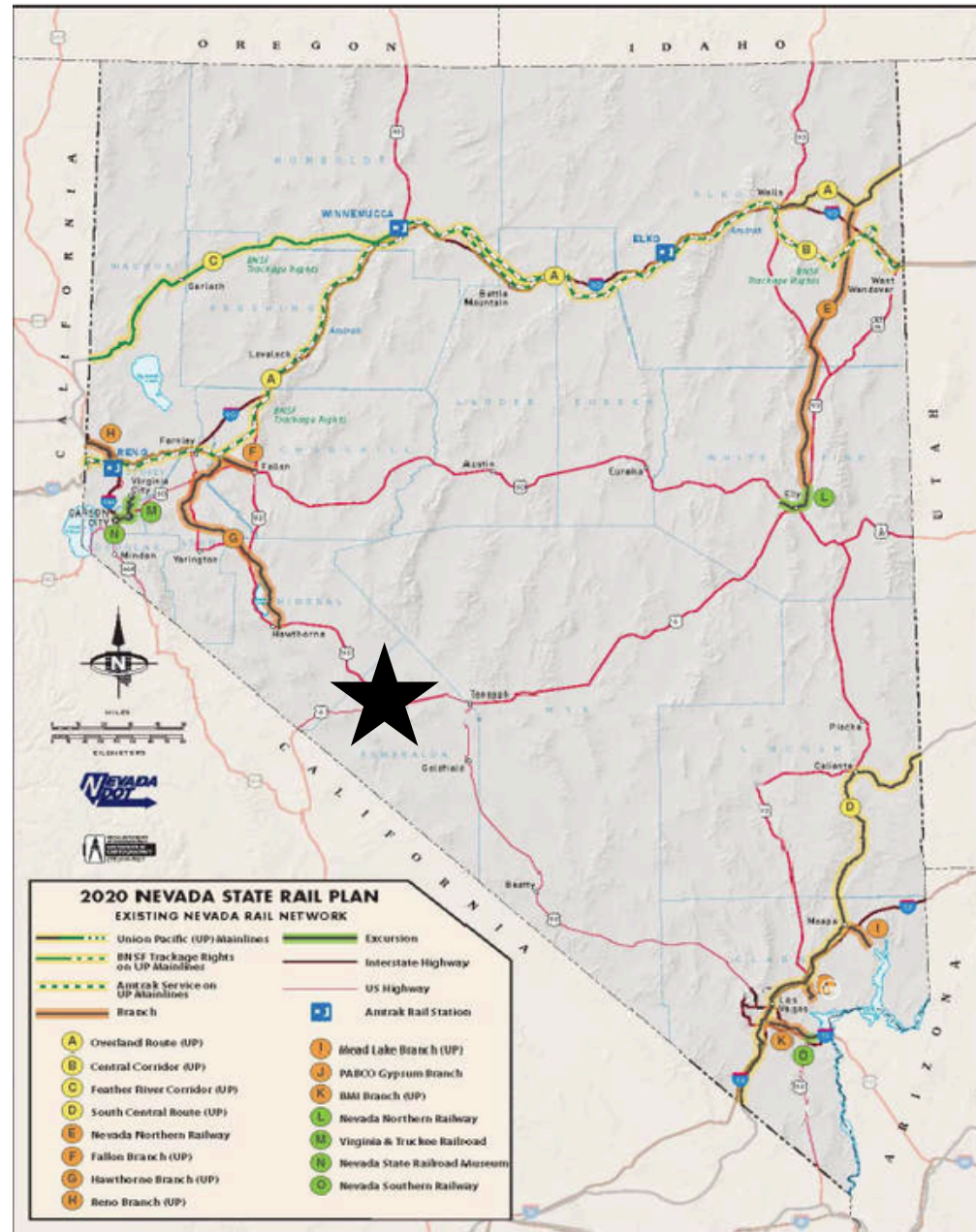
GATEWAY TO GREENLINK WEST



GEO THERMAL RESERVOIR



AMERICA'S LITHIUM HUB



Our location is not just about the tangible assets we hold, but also about the strategic advantages that position us uniquely in the market.

Millers proximity and access to Highway 95 and the Hawthorne freight railway enhance our logistical capabilities, allowing for efficient material transport and supply chain optimizations.

The site also has substantial secured water rights essential to our processing facilities.

Application No. 10804 Certificate Recd No. 10032 Book 34 Page 10032

THE STATE OF NEVADA
CERTIFICATE OF APPROPRIATION OF WATER

WHEREAS, Hallace T. Boudy, Agent has presented to the State Engineer of the State of Nevada Proof of Application of Water to Beneficial Use, from an underground source through a drilled well, pump and distribution system for Milling and Domestic purposes. The point of diversion of water from the source is as follows: SEK NW Section 10, T.3N., R.40E., M.D.B.6M., or at a point from which the SE corner of said Section 10 bears S. 1° 16' 44" E., a distance of 3,724.63 feet. situated in Esmeralda County, State of Nevada.

Now Know Ye, That the State Engineer, under the provisions of NRS 533.425, has determined the date, source, purpose, amount of appropriation, and the place where such water is appropriated, as follows:

Name of appropriator: Esmeralda Extraction Corporation
Post-office address: Tonopah, Nevada
Amount of appropriation: 0.85 c.f.s., but not to exceed 105.12 million gallons annually
Period of use, from January 1st to December 31st of each year
Date of priority of appropriation: November 8, 1976

Description of Works of diversion, manner and place of use: Water is developed in the well, thence conveyed into a 12,000 gallon storage tank thence via a distribution system to the place of use within the NW NW of Section 11, T.3N., R.40E., M.D.B.6M., where it is used for Milling and Domestic purposes.

This certificate is issued subject to the terms of the Permit.

In Testimony Whereof, I, PETER G. MORROS, State Engineer Compared: lmw/bd of Nevada, have hereunto set my hand and the seal of my office, this 22nd day of JUNE, A.D. 1982.
County Records: _____ State Engineer

Application No. 30086 Certificate Recd No. 10021 Book 34 Page 10021

THE STATE OF NEVADA
CERTIFICATE OF APPROPRIATION OF WATER

WHEREAS, Hallace T. Boudy, Agent has presented to the State Engineer of the State of Nevada Proof of Application of Water to Beneficial Use, from an underground source through a drilled well, pump and distribution system for mining, milling and domestic purposes. The point of diversion of water from the source is as follows: NW NW Section 11, T.3N., R.40E., M.D.B.6M., or at a point from which the NW corner of Section 2, T.3N., R.40E., M.D.B.6M., bears N. 3° 11' W., a distance of 6,195.02 feet. situated in Esmeralda County, State of Nevada.

Now Know Ye, That the State Engineer, under the provisions of NRS 533.425, has determined the date, source, purpose, amount of appropriation, and the place where such water is appropriated, as follows:

Name of appropriator: Esmeralda Extraction Corporation
Post-office address: Tonopah, Nevada
Amount of appropriation: 0.089 c.f.s., but not to exceed 20.998 million gallons annually
Period of use, from January 1st to December 31st of each year
Date of priority of appropriation: March 17, 1976

Description of Works of diversion, manner and place of use: Water is developed in the well, thence conveyed into a 12,000 gallon storage tank thence via a distribution system to the place of use, where it is used for mining, milling and domestic purposes all within NW NW of Section 11, T.3N., R.40E., M.D.B.6M.

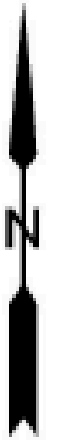
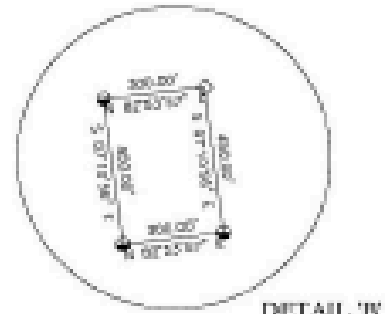
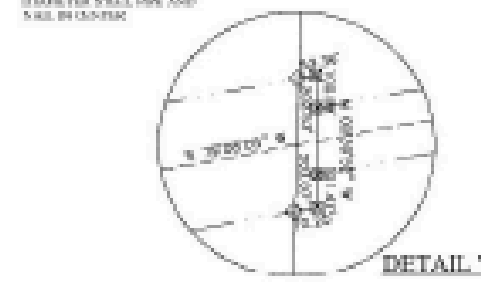
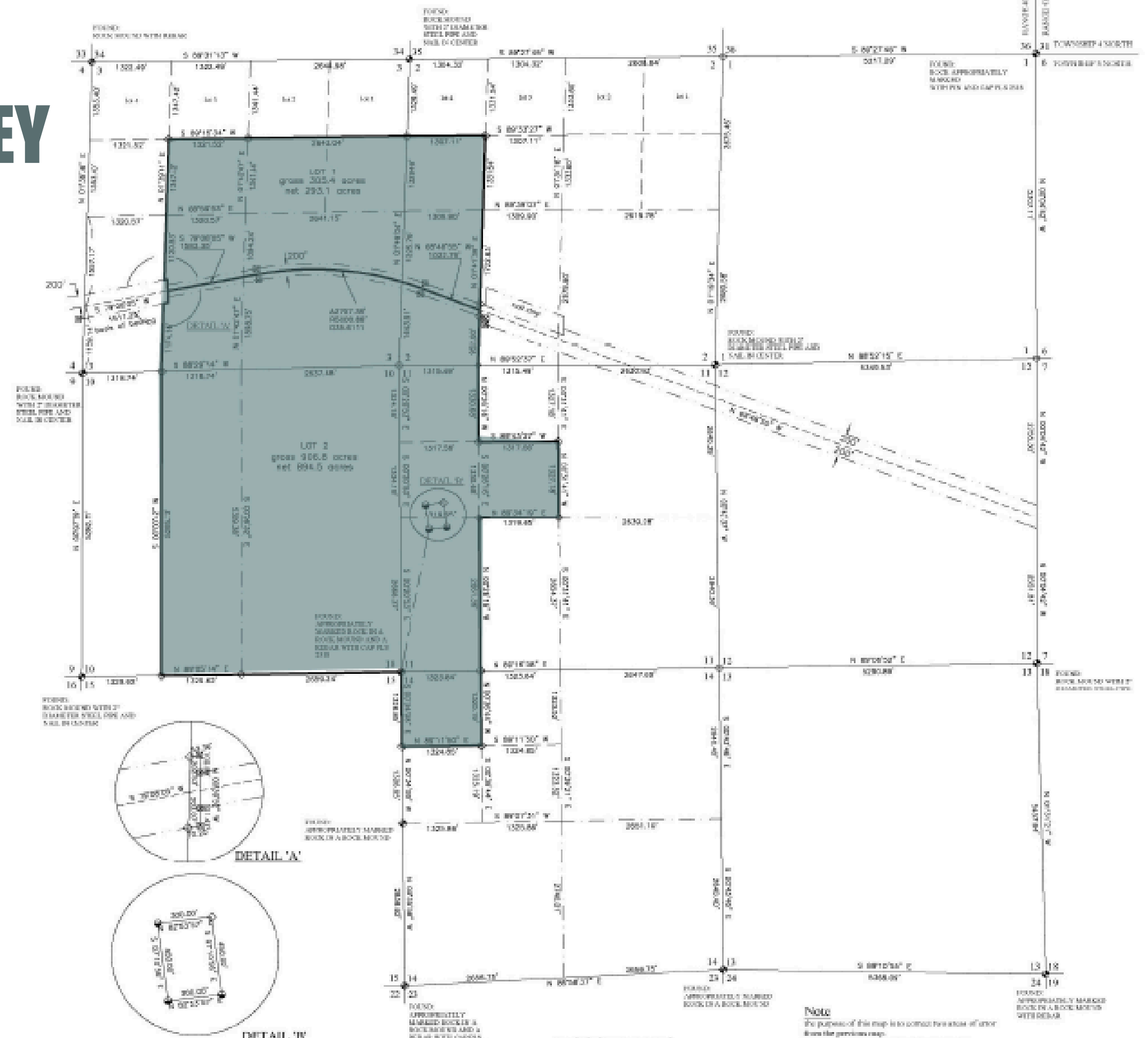
This certificate is issued subject to the terms of the Permit.

In Testimony Whereof, I, PETER G. MORROS, State Engineer Compared: lmw/bd of Nevada, have hereunto set my hand and the seal of my office, this 22nd day of JUNE, A.D. 1982.
County Records: _____ State Engineer

MILLERS SURVEY

MILLERS TAILING PROJECT

This slide presents a certified surveyor's map of our property, offering a detailed view of our extensive physical assets and their strategic layout, which forms the backbone of our operational capabilities.



KEY: (B) BARKOV, PL 44011 DATE

SURVEYORS CERTIFICATE

1. KEVIN B. BARKOV, A PROFESSIONAL LAND SURVEYOR IN THE STATE OF NEVADA, DID THIS PLAT IN ACCORDANCE WITH THE PROVISIONS OF A SURVEY CONDUCTED IN ACCORDANCE WITH THE PROVISIONS OF THE NEVADA SURVEYING ACT, CHAPTER 624, NRS, AS AMENDED.

2. THE LANDS SURVEYED LIE WITHIN SECTION 2, 3, 10, 11 & 14, TOWNSHIP 3 NORTH, RANGE 40 EAST, N.D.M., ESMERALDA COUNTY, NEVADA, AND THE SURVEY WAS COMPLETED ON MARCH 11, 2011.

3. THIS PLAT COMPLES WITH ALL APPLICABLE STATE STATUTES AND ANY LOCAL ORDINANCES IN EFFECT AT THE DATE THE SURVEY WAS COMPLETED.

4. THE ACCURACY OF THE PLAT AND OF THE CHARACTERISTICS, QUANTITY, LOCATION AND AGE OF SURVEY MARKS IS GUARANTEED BY THE SURVEYOR.

LEGEND

- These standard symbols will be found in the drawing.
- ⊕ 4x4 post with PLS 860 tog
 - ⊕ ROUND SECTION OR QUARTER CORNER
 - ⊕ SET 2-1/2" CAP PLS 10111
 - ⊕ CONCRETE HIGHWAY MARKER
 - DIMENSION POINT ONLY
 - PROPERTY LINE
 - SECTION LINE
 - QUARTER SECTION LINE
 - SIXTEENTH SECTION LINE
 - TIE LINES
 - EDGE OF HIGHWAY RIGHT OF WAY
 - CENTER LINE HIGHWAY



RECORDERS STATEMENT
SUBSEQUENT CHANGES TO THIS DOCUMENT SHOULD EXAMINED BY REFERENCE TO THE CUMULATIVE INDEX MAINTAINED BY THE ESMERALDA COUNTY RECORDER

Amended RECORD OF SURVEY

OF
PORTIONS OF SECTIONS 2, 3, 10, 11 & 14
TOWNSHIP 3 NORTH, RANGE 40 EAST, N.D.M.,
ESMERALDA COUNTY, NEVADA
APN 008-111-08
FOR
TONOPAH RESOURCES, INC

BASIS OF BEARING
SECTION 2 AND HIGHWAY REFERENCE
SECTION 10 AND HIGHWAY REFERENCE
SECTION 11 AND HIGHWAY REFERENCE
SECTION 13 AND HIGHWAY REFERENCE
SECTION 14 AND HIGHWAY REFERENCE

Note
The purpose of this map is to correct the error of error from the previous map.
1. The portion of section 2 and 3 were divided without taking in to account the government line on the north side of the section.
2. The adjustment used for the ground distance used two MDOT offset stations. After field observations it has been found that the distance between these monuments was not correct. All distances and bearings on this map have been changed to conform with ground distances.

ASAPS
ADVANCED SURVEYING & PROFESSIONAL SERVICES
3000 S. HARRISON, PMB
PO BOX 940
TENOAH, NV 89449

NEVADA - ACRG ECONOMIC MODEL

MILLERS HUB, ESMERALDA COUNTY, NV

Each Hub will transform mine-scarred rural lands into productive industrial economic development zones while breaking U.S. dependence on foreign-controlled mineral supply chains.



JOB CREATION

The Millers Hub will generate construction and operations jobs, creating high-wage, long-term employment while catalyzing local housing, retail, and service demands.

WORKFORCE UPSKILLING APPRENTICESHIPS



- Metallurgy
- Process Engineering
- AI-Enabled Operations
- Environmental Stewardship

CURRENT ECONOMIC REALITY

- Fewer than 1,000 residents
- Poverty rates are nearing 20%
- Aging population
- Minimal health and human services
- Fewer than 700 housing units



ACRG PARTNERSHIPS ENSURING LOCAL BENEFITS

- Nevada's CTE Programs
- Universities
- Tribal Governments



SUPPORT PARTNERSHIP OPPORTUNITIES

- Local EDAs: Southwest Central Regional EDA (SWCREDA), Nye County Community Coalition
- State-level EDAs: Nevada Governor's Office of Economic Development (GOED), NV Dept. of Employment, Training & Rehabilitation (DETR)
- Mining Associations: Nevada Mining Association, Nevada Battery Coalition, Nevada Tech Hub Consortium
- Career & Tech Programs: Nye/Esmeralda CTE programs, Nevada DOE statewide CTE initiatives
- Universities & Colleges: University of Nevada Reno (Mackay School of Mines), College of Southern Nevada, Great Basin College



THIS MODEL WILL BE EXECUTED AT ALL EXPANSION HUB LOCATIONS

MILLERS SITE - PERMITTING

TAILINGS PROCESSING PERMITTING ANALYSIS



The permitting requirements for this project are extensive. The project involves reprocessing existing tailings on ACRG's private Millers property in Nevada for critical mineral extraction.

The permitting timeline spans 18 months, divided into six-month blocks for optimal project management and regulatory coordination.

IMMEDIATE

NEXUS 7 ELEMENTS FORMED

EARLY AGENCY

COORDINATION EFFORTS

BASELINE ENVIRONMENTAL STUDIES

STAKEHOLDER ENGAGEMENT

TECHNICAL PREPARATION

12-18 MOS

AGENCY REVIEW PROCESS, PERMIT MODIFICATIONS & CONDITIONS, FINAL APPROVALS & CONSTRUCTION AUTHORIZATION

- Respond to NDEP Requests for Additional Information
- Coordinate Multi-Agency Reviews
- Negotiate Permit Conditions & Requirements
- Complete Requested Supplemental Environmental Studies
- Obtain NDEP Reclamation Permit Approval
- Secure Water Pollution Control & All Stormwater Permits
- Complete Air Quality Permits

6-12 MOS

NDEP PERMIT APPLICATIONS, FEDERAL COMPLIANCE COMPLETE, FINANCIAL ASSURANCE

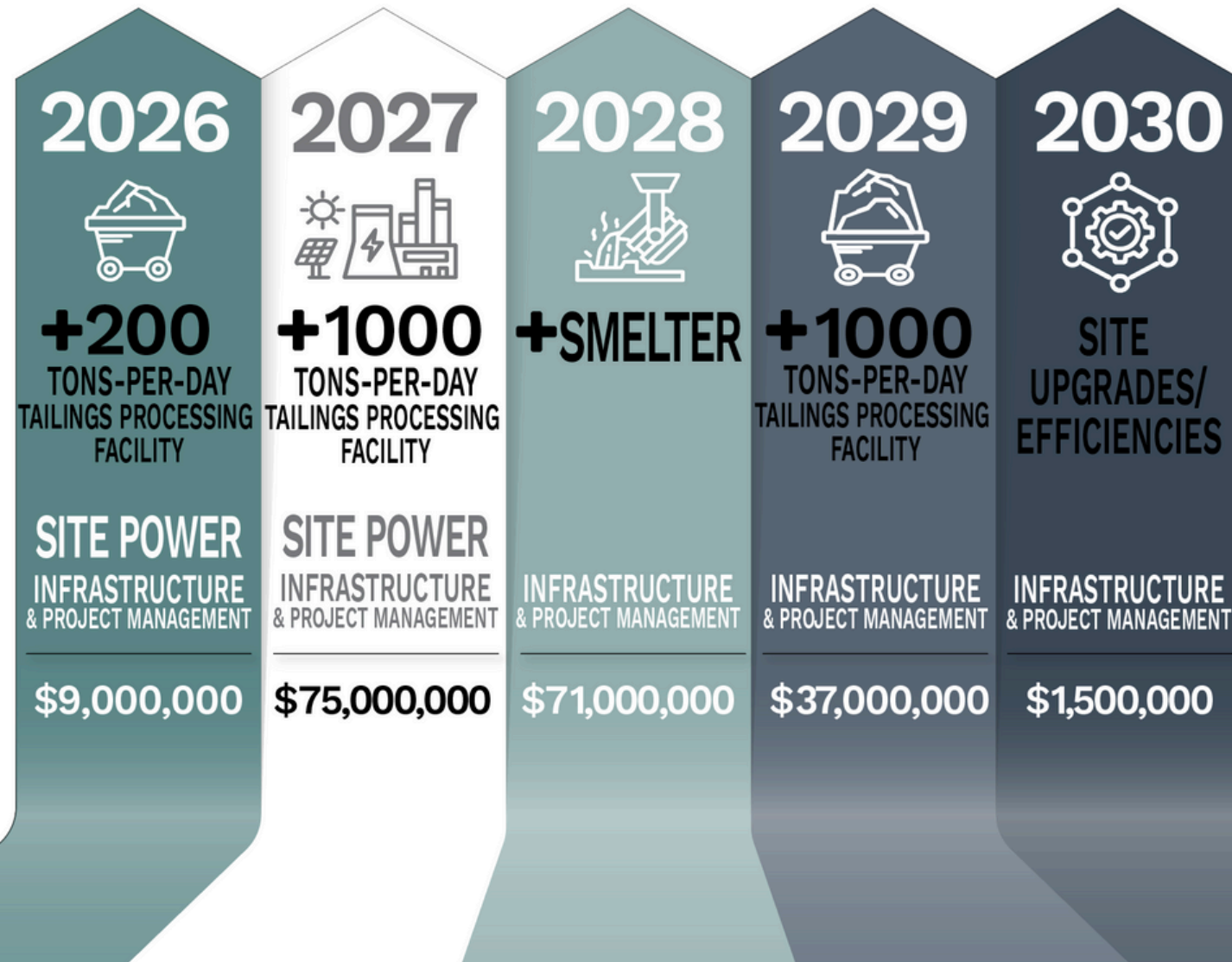
- NDEP Reclamation Permit
- NDEP Water Pollution Control Permit
- Construction Stormwater Permit (NVR100000)
- Multi-Sector General Permit (MSGP)
- Mining-Specific Stormwater Permit
- Construction Stormwater Permit (NVR100000)
- Air Quality Permits
- MSHA Compliance
- Local Building and Construction Permits
- EHS Safety Management Program
- NEPA Environmental Assessment



TIMELINE WILL ACCELERATE WITH EXPEDITED APPROVALS

ACRG CAPITAL / COST SHARE MODEL

MILLERS SITE - FINANCIAL PROJECTIONS - 5 YEAR ANALYSIS



Phase 1	Phase 2
Grid Connection - 0.5 MW NV Energy	Permitting for 80 MW / 300 MW BESS on Millers SEZ
Completion of Millers SK-1300	Single Circuit 34.5 kV Transmission Line to Miller Property
ACRG Office Park and Operating Infrastructure	Double Circuit 230 kV Transmission Line to Miller Property
200 Tons per Day Portable Processing Facility	80 MW PV / 300 MWh BESS - First Half
ACRG 2026 Project Management Expenses	BLM Reclamation Bond for Millers SEZ - First Half
Total Phase 1	1,000 Tons per Day Processing Facility Operations
	ACRG Demonstration Project - 7 MW
	ACRG Operating Infrastructure and Vehicle Fleet Additions
	ACRG 2027 Project Management Expenses
	Total Phase 2

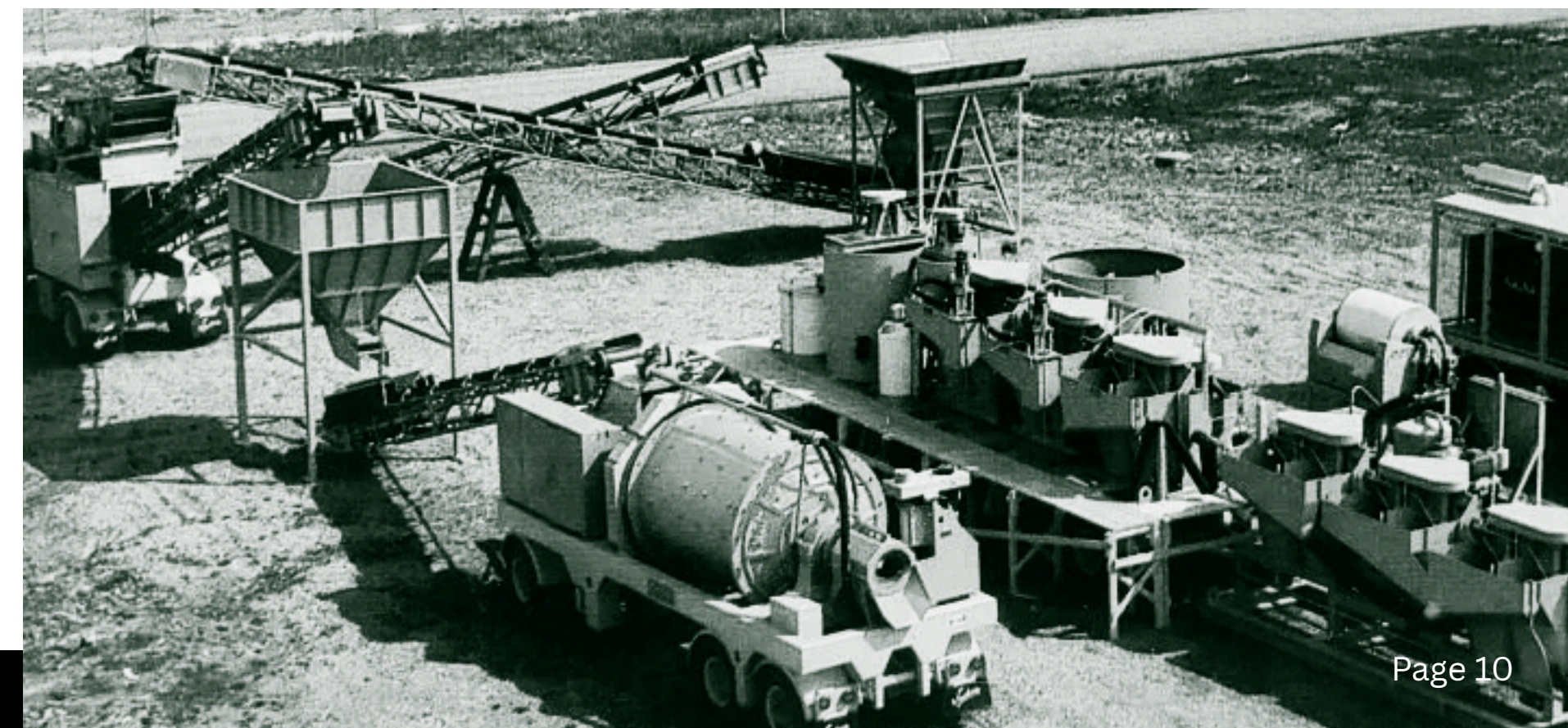
Phase 3	Phase 4
80 MW PV / 300 MWh BESS - Second Half	Permitting for 320 MW / 1,200 MW BESS on Millers SEZ
BLM Reclamation Bond for Millers SEZ - Second Half	Double Circuit 230 kV Transmission Line to Miller Property
ACRG Demonstration Project - 10 MW	320 MW PV / 1,200 MWh BESS Buildout on Millers SEZ
ACRG 2028 Project Management Expenses	BLM Reclamation Bond for Millers SEZ - 320 MW / 1,200 MWh BE
Total Phase 3	Data Center - 70 MW Capacity
	ACRG 2029 Project Management Expenses
	Concentrate / REE Smelter - 20 MW
	Additional 1,000 Tons per Day Tailings Processing Center
	ACRG 2030 Project Management Expenses

PROJECTED FINANCIALS - REVENUE & NET INCOME

REVENUES	2026	2027	2028	2029	2030	2031
Tailings Processing - 200 Tons Per Day	\$5,475,000	\$7,446,000	\$7,594,920	\$7,746,818	\$7,901,755	\$8,059,790
Tailings Processing - 1,000 Tons Per Day	-	-	37,974,600	38,734,092	39,508,774	40,298,949
On Site Generated Power Offtake 4 MW	-	-	3,644,160	3,714,240	3,784,320	3,854,400
Smelter - 20 MW	-	-	-	-	56,764,800	57,816,000
+Tailings Processing - 1,000 Tons Per Day	-	-	-	-	-	40,298,949
TOTAL REVENUES	\$5,475,000	\$7,446,000	\$49,213,680	\$50,195,150	\$107,959,649	\$150,328,088

NET INCOME	2026	2027	2028	2029	2030	2031
Tailings Processing - 200 Tons Per Day	\$821,250	\$1,116,900	\$1,139,238	\$1,162,023	\$1,185,263	\$1,208,968
Tailings Processing - 1,000 Tons Per Day	-	-	7,594,920	7,746,818	7,901,755	8,462,779
On Site Generated Power Offtake 4 MW	-	-	182,208	371,424	567,648	770,880
Smelter - 20 MW	-	-	-	-	8,514,720	11,563,200
+Tailings Processing - 1,000 Tons Per Day	-	-	-	-	-	8,462,779
TOTAL NET INCOME	\$821,250	\$1,116,900	\$8,916,366	\$9,280,265	\$18,169,386	\$30,468,607

PORTABLE TAILING FACILITY



DORÉ OFFTAKERS - 3 TARGET SECTORS

As a reliable producer of critical mineral, ACRG will integrate into domestic supply chains that activate the government's desire to enhance critical mineral independence. Through multiple Critical Mineral Processing Hubs, ACRG will locate, process, and integrate valuable domestic resources to preserve American interests.

ACRG has identified targets and engaged in pre-contract discussions in each sector to obtain LOI's before production.



OEM'S

INDUSTRIAL / ELECTRONICS /
EV / SEMICONDUCTORS

3M

- Consumes gold and silver for electronics, medical, abrasives
- Government contracts + U.S. sourcing priority
- Active sustainability mandates

INTEL

- Semiconductors-high-purity gold / silver
- DPA-linked customer / ESG sourcing controls

TESLA

- Silver for battery and electronics systems
- Publicly committed to U.S. critical mineral sourcing

HONEYWELL

- Precious metals-aerospace, sensors, defense systems
- Longstanding U.S. federal vendor, strong ESG profile



DEFENSE BUYERS

DLA (Defense Logistics Agency)

- Procures, stores, and manages U.S. strategic reserves of critical materials
- Actively buying and managing precious metals (e.g. silver, platinum, beryllium)

LOCKHEED MARTIN

- Large consumer of gold/silver in avionics, guidance, space tech
- Active DPA prime; committed to domestic sourcing of materials

RAYTHEON TECHNOLOGIES (RTX)

- Precious metals-military electronics and aerospace
- Responsible sourcing commitment and supply chain independence



ROYALTY, STREAMING, TRADING

FRANCO-NEVADA CORP

- World's largest gold-focused royalty company
- May invest in royalty/streaming tailings reprocessing

OSISKO GOLD ROYALTIES

- Focused on North America and infrastructure-light operations
- Actively finances tailings and reprocessing-based projects

WHEATON PRECIOUS METALS

- Large-scale streamer of gold/silver from non-core projects
- Recently adopted "clean" and ESG-compliant sourcing

GLENCORE LTD.

- One of the world's largest physical precious metals traders
- Engages in offtake agreements, especially for polymetallic and reprocessing projects

TRAFIGURA GROUP PTE LTD.

- Global commodity trader, active positions in doré concentrates
- Deploys financing and marketing offtake deals in complex recovery streams

STONEX GROUP INC

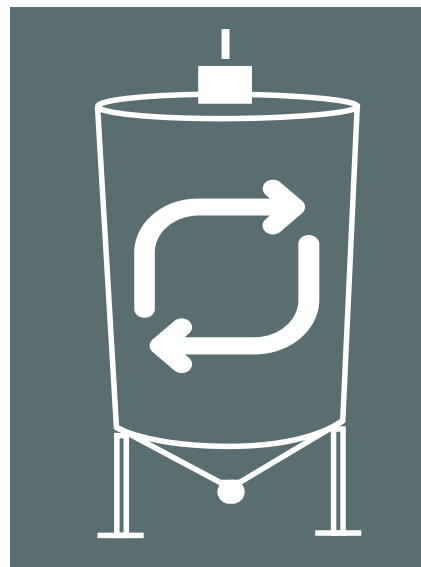
- Offers precious metals trading, hedging, and physical delivery services for producers
- Works with refiners and miners to structure forward contracts, prepay, and floor-protected streams

NEXUS 7 ELEMENTS

ACRG & ENERG4'S JOINT VENTURE- DEC 2025

The joint venture combines ACRG's feedstocks and operational expertise with Energ4's patented Clean Mineral Processing – CHIPS™ (Chemelectrosonication Ionization Precipitation System) technology for extracting rare earth elements from existing feedstocks of gold, silver, platinum-group metals and vanadium.

- ACRG holds 51 percent ownership through its wholly owned subsidiary, providing governance oversight and strategic direction
- Energ4's newly formed entity holds 49 percent ownership and will manage day-to-day operations
- Energ4's team will serve in key operational roles, including CEO and president of the joint venture



CHIPS PROCESSING

1. CLEAN PROCESSING TECHNOLOGY
2. CLOSED LOOP PROCESSING SYSTEM
3. CAN SERVE MULTIPLE FEEDSTOCKS
4. SCALABLE

A stylized map of the state of Nevada, rendered in a halftone or dot-matrix pattern. A white circular icon with a black star is positioned in the lower-left quadrant of the map. A white rectangular text box is overlaid on the upper-right portion of the map.

NEVADA MILLERS LAUNCH SITE

THE PLAN - PHASE 2

CRITICAL MINERAL PROCESSING HUBS

ACRG will establish Critical Mineral Processing Hubs across additional states with concentrations of legacy mine waste and strategic minerals, beginning with Arizona, Colorado, Utah, and New Mexico. This will create a connected national network of remediation-driven processing centers.

ACRG has already established the next several recommended Critical Mineral Processing Hubs.

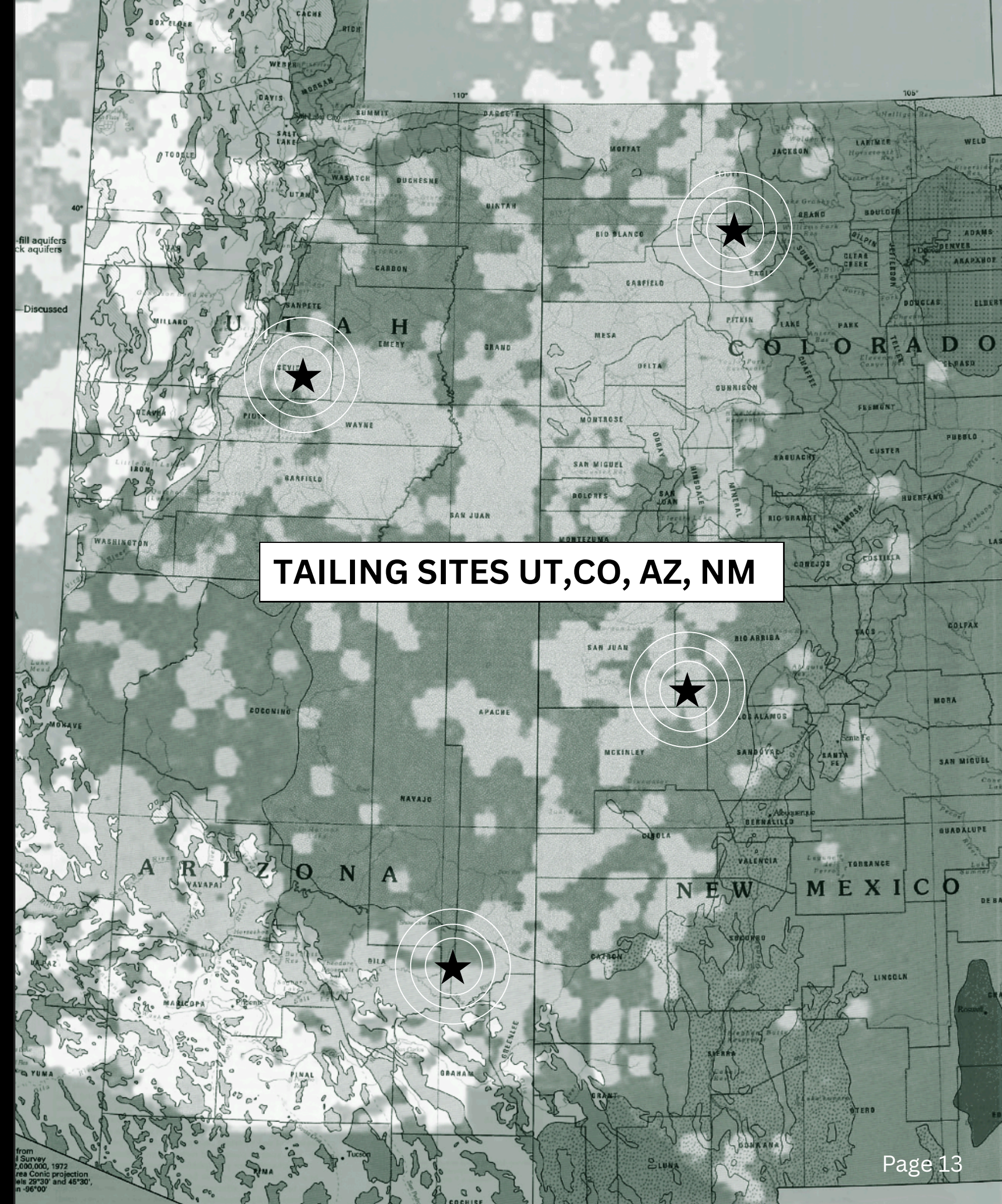
EACH CRITICAL MINERAL PROCESSING HUB WILL FOLLOW THE EXECUTIONAL STEPS DEFINED AT THE MILLERS LAUNCH SITE:



- 1-TAILINGS IDENTIFICATION- MINERALOGY AND LOCATION
- 2-DEFINE AND ADDRESS POWER REQUIREMENTS
- 3-ENGAGE EPCM & BUILD INFRASTRUCTURE
- 4-LAUNCH OPERATIONS

ESTIMATED COST PER ADDITIONAL HUB

Cost of Parcel/Power to Site/Water - (SITE SPECIFIC)	TBD
Permitting	\$ 1,000,000
Chemistry Work/Minerology/Metallurgical/Consulting	\$ 700,000
Direct Processing Plant CAPEX	\$24,000,000
EPCM & Site Prep	\$12,000,000
TOTAL ESTIMATED COST	\$37,700,000



PHASE 2 ECONOMIC PLAN BY STATE

ARIZONA, COLORADO, UTAH, NEW MEXICO - **CRITICAL MINERAL PROCESSING HUBS**

ARIZONA

Arizona's history in copper and critical mineral production, along with its involvement in clean energy and defense industries, positions it as a prime candidate for ACRG's Critical Mineral Processing Hubs. Rural and tribal areas in the state are experiencing persistent economic challenges. ACRG plans to create new job opportunities in construction, operations, and supply chain support.

COLORADO

The Colorado Hub will focus on reprocessing tailings from gold, silver, and critical mineral extraction. However, Boulder County currently faces challenges related to a limited workforce housing supply and high living costs. The Hub aims to address these issues by providing apprenticeships, career and technical education (CTE)-aligned training, and community-focused programs such as childcare to help reduce workforce barriers.

UTAH

Utah's established mining economy and strong defense and aerospace industries make it a natural location for a Critical Mineral Processing Hub. With legacy mine waste across the state, ACRG's initiative will convert environmental liabilities into strategic assets while creating construction and long-term operations jobs.

NEW MEXICO

New Mexico's mining legacy, coupled with its rural economic difficulties, makes it an excellent site for ACRG's expansion of Critical Mineral Processing Hubs. The state has high unemployment rates in its rural counties and a significant tribal population, which presents opportunities for workforce development, cultural preservation, and generational upskilling.



SUPPORTING EXECUTIVE ORDERS



EO 14154-“Unleashing American Energy”

- Remove Energy Barriers
- Boost Domestic Processing
- Relieve EV & Environmental Review
- Target the Social Cost of Carbon
- Agency Guidance and Implementation



EO 14156-“Declaring a National Energy Emergency/Critical Minerals Emphasis”

- Federal Agencies Expedite Exploitation of Domestic Energy Sources
- Fast Track Energy Infrastructure Projects / Special Permitting Approvals
- CEQ to Issue New NEPA Guidance for Faster Permitting of Energy / Mineral Projects



EO 14241-“Immediate Measures to Expand Domestic Mineral Production”

- Prioritize Mineral Production on Federal Lands and Identify Development Sites
- Waives Certain Statutory Requirements Under Title 50 to Streamline Approvals / Permitting Processes
- Coordinate Financial Support Through SOD and Federal Agencies, Fast Track Financing Tools for Domestic Mineral Producers

SUPPORTING EXECUTIVE ORDERS



EO 14261-“**Coal Designated as a Mineral**”

- Expedited Permitting
- Identify Coal on Federal Lands and Remove Barriers to Production
- Advance Coal Emerging Industries and Technologies
- Expand Coal Support Through Financial Tools



EO 14272-“**National Security & Economic Resilience Through Critical Mineral Processing**”

- Defines Processed Minerals
- Prioritize Mineral Production and Accelerate Permitting
- Uses Defense Production Act to Fund Mineral Projects



EO 14285-“**Unleashing America’s Offshore Critical Minerals**”

- Expedite Permitting
- Develop Domestic Capabilities/Technologies
- Strategic Partnership Collaboration with the Private Sector

SUPPORTING EXECUTIVE ORDERS



CONGRESS P.L. 118-233 - “Importance of Critical Minerals in Healthcare”

- Interior Secretary to Consult Alongside Agriculture Designating Critical Minerals
- Integrates Healthcare Considerations Into Strategic Mineral Designation Policy



CONGRESS P.L. 119-21 - “One Big Beautiful Bill Act”

- Allocates Resources for Critical Mineral and National Defense Stockpile
- Critical Minerals Designated as a New Category for Incentive Eligibility

CREATING A SMALL BUSINESS SUCCESS STORY



CONTACT US

+1.720.458.1124

ir@acrgincorp.com

12567 West Cedar Drive,
Lakewood, CO 80228 USA

